



Engine	Cummins L9
Max. Gross	210 kW (282 hp / 286 ps) @ 2,100 rpm
Max. Net	199 kW (267 hp / 271 ps) @ 2,100 rpm
Operating Weight	24,300 kg
Standard Bucket Size	4.2 m ³
Standard Breakout Force	186 kN
Standard Dump Clearance	3,249 mm

870T WHEEL LOADER

870T SPECIFICATIONS >>>

ENGINE

Emission Regulation	EU Stage V
Manufacturer	Cummins
Model	L9
Max. Gorss	210 kW (282 hp / 286 ps) @ 2,100 rpm
Max. Net	199 kW (267 hp / 271 ps) @ 2,100 rpm
Peak Torque	1,525 N·m @ 1,100 rpm
Displacement	8.9 L
Number of Cylinders	6
Aspiration	Turbocharged & Air-to-air intercooled

TRANSMISSION

Transmission Type	Countershaft, powershift
Torque Converter	Single stage, three elements
Maximum Travel Speed, fwd	38 km/h
Maximum Travel Speed, rev	25.4 km/h
Number of Speed, fwd	4
Number of Speed, rev	3

AXLES

Differential Front Type	Limited slip
Differential Rear Type	Limited slip
Axle Oscillation	±10°

STEERING

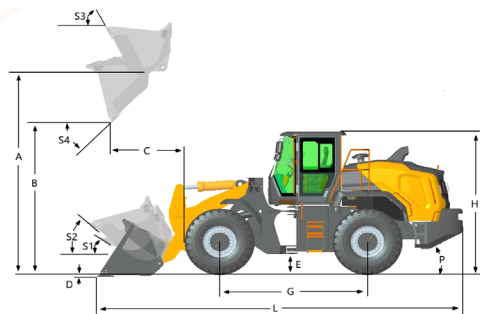
Steering Hydraulic System	Flow amplifying
Steering Relief Pressure	25 MPa

BRAKES

Service Brake Type	Wet discs brake
Service Brake Actuation	Full hydraulic
Parking Brake Type	Drum
Parking Brake Actuation	Electro-hydraulic release

HYDRAULIC SYSTEM

Main Pump Type	Piston
Main Relief Pressure	30 MPa
Raise	5.8 s
Dump Time	1.3 s
Float Down Time	3.5 s
Hydraulic Cycle Time	10.6 s



LOADER ARM PERFORMANCE WITH STANDARD BUCKET 4.2 m³

Tipping Load - Straight (ISO 14397-1:2007)	18,630 kg
Tipping Load - Full Turn (ISO 14397-1:2007)	16,120 kg
Bucket Breakout Force	186 kN
A Maximum Hinge Pin Height	4,540 mm
B Dump Clearance at Full Height Discharge	3,249 mm
C Dump Reach at Full Height Discharge	1,175 mm
D Maximum Digging Depth, Bucket Level	95 mm
S ₁ Rollback at Ground Level	44°
S ₂ Bucket Rollback at Carry	46.2°
S ₃ Bucket Rollback at Maximum Height	60.5°
S ₄ Maximum Dump Angle at Full Height	45°

BUCKET PERFORMANCE

Reference Bucket	3.0-7.0 m³
------------------	------------

DIMENSIONS

E Ground Clearance	450 mm
G Wheelbase	3,550 mm
H Cab Height	3,460 mm
J Wheel Tread	2,280 mm
K Width over Tires	2,980 mm
L Length with Bucket Down	9,142 mm
M Turn Angle, Either Side	38°
P Rear Angle of Departure	29°
R ₁ Turning Radius, Bucket Carry	7,536 mm
R ₂ Turning Radius, Outside of Tire	6,795 mm
W Width over Bucket	3,210 mm

TIRES

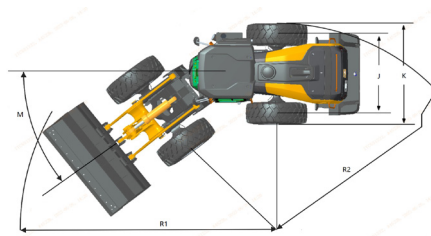
Tire Size	26.5R25 ★ L-3
-----------	---------------

OPERATING WEIGHTS

Operating Weight	24,300 kg
------------------	-----------

SERVICE CAPACITY

Fuel Tank	330 L
Engine Oil	22 L
DEF Tank	45 L
Cooling System	35 L
Hydraulic System	270 L
Transmission and Torque Converter	35 L
Axles, Front/Rear	52 L / 50 L



Guangxi Liugong Machinery Co., Ltd.

No. 1 Liutai Road, Liuzhou, Guangxi 545007, PR China

T: +86 772 3886124

E: overseas@liugong.com

www.liugong.com

Specifications and designs are subject to change without notice. Machines shown may include optional equipment. Liugong standard and optional equipment may vary from region to region. Please consult your Liugong dealer for information specific to your area. Engine power kW is converted to horsepower (1 kW=1.3596 ps and 1 kW=1.3410 hp) in this file.

11/2025 Designed by LiuGong
Replace the previous versions of 10/2025